



ROBINET CU PLUTITOR / FLOAT VALVE

AS-FV

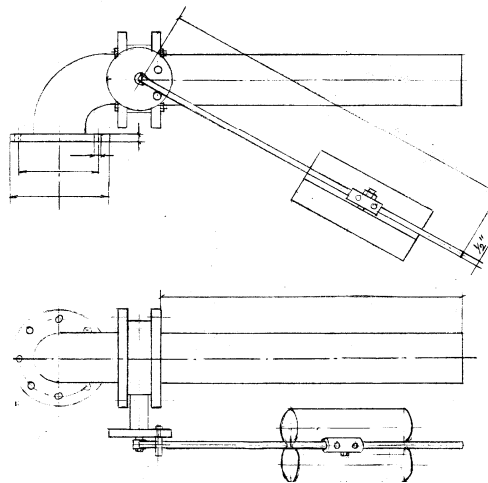
Manevrare – Utilizare:

Sunt utilizate pentru umplerea rezervoarelor si mentinerea apei la nivelul necesar, pre-setat.



OPERATION – USAGE:

It is used for the filling up of reservoirs or tanks as it maintains a desired pre-set reservoir level.



CARACTERISTICI TEHNICE TECHNICAL CHARACTERISTICS

DIMENSIUNI DISPONIBILE / Size:

DN50 – DN250

PRESIUNE DE LUCRU / Working Pressure:

10 – 16 kg/cm²

PROTECTIE / Coating:

VOPSEA EPOXIDICA / Epoxy paint

TEMPERATURA DE LUCRU / Working
Temperature:

-10°C – +80°C

DIMENSIUNI / Dimensions:

CONF. / Acc.to DIN3202 /EN 558-1

MATERIALE / MATERIALS:

CORP / BODY:

Fonta ductila / Ductile cast iron GGG-40 DIN1693 / EN 1563

DISC / DISC:

Fonta ductila / Ductile cast iron GGG-40 DIN1693 / EN1563

AX CONTROL / CONTROL SHAFT:

Otel inox / Stainless steel X5CrNi18 10 W.nr 1.4301 AISI 316
EN 10088-3

AX CONDUCATOR VANA / VALVE'S LEADING
SHAFT:

Otel inox / Stainless steel X20Cr13 nr.1.4021 EN 10088-3

GARNITURA / RUBBER SEALING RING:

EPDM

AX ACTIONARE / ACTUATION SHAFT:

Otel inox / Stainless steel X20Cr13 nr.1.4021 EN 10088-3

FLOTOR / FLOATER:

1) **Otel inox** / Stainless steel AISI316, X20CrNiMo18 12 EN
10088-3

Sau 2) **Material plastic** / Plastic