



ACCESS COVERS & FRAMES

Class E600
EN124 : 1994
EN GJS 500-7 Iron
ISO 1083 / EN1563

SOLO R S I EN124 E600 NF

SOLO COVER



DESIGN FEATURES :

- **Material(s) :**
 - ☞ SG Iron to ISO 1083 / EN1563, Grade 500-7.
- **Design load :**
 - ☞ 600 kN to EN 124.Group 5 - Areas imposing high wheel loads, e.g. docks, aircraft pavement
- **Coating :**
 - Non toxic waterbased black paint.
- **Product Certification :**
 - NF Mark
 - This quality mark certifies conformity to the 'NF' regulation 110 and other additional features as highlighted (☞) by the authorising body AFNOR CERTIFICATION, 11, rue Francis de Pressensé F-93571 LA PLAINE SAINT DENIS CEDEX

SPECIAL FEATURES :

- **Mass :**
 - Cover : 55 Kg
 - Product total : 87,353 kg.
- **Surface finish :**
 - Cover: Anti-slip surface with 4L patented design.
- **Seatings ensure non-rock stability and silence :**
 - ☞ Wide flat "Chloroprene rubber" cushioning insert stuck on the cover.
- **Frame bearing pressure :**
 - ☞ $p \leq 7.5 \text{ N/mm}^2$.
- **Securing of cover/grating within frame :**
 - ☞ with sufficient mass per unit area.
- **Frame type :**
 - Circular monoblock as cast.
 - ☞ Depth : 100 mm
- **Cover type :**
 - C : External diameter : 650 mm.
 - ☞ Depth of insertion : e = 60 mm.
- **Hinge :**
 - ☞ Opening angle $\approx 120^\circ$.
 - Cover block at 90° preventing accidental closure.
 - Identification mark : "S".

CIVIL ENGINEERING :

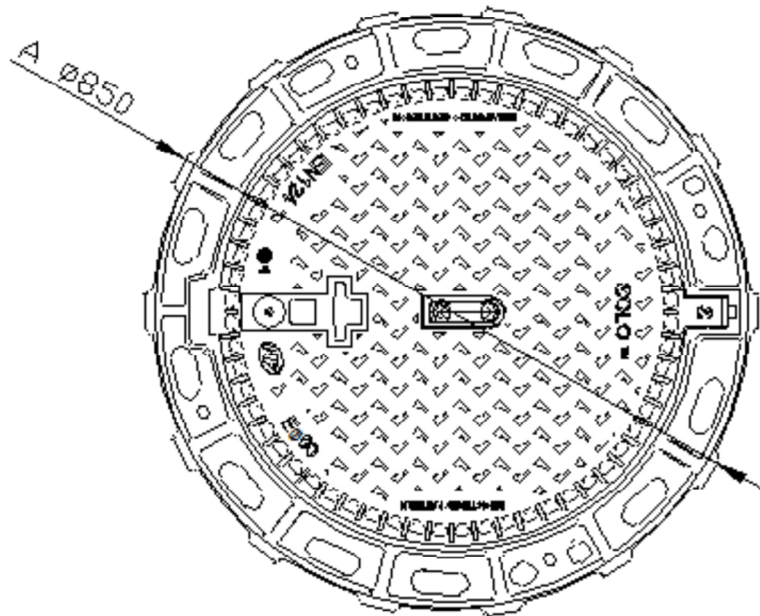
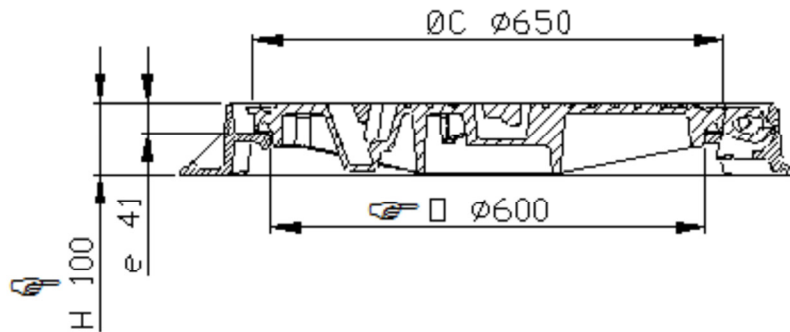
Frame provided with $\varnothing 20$ mm holes to dowel on $\varnothing 740$ mm circle if necessary.

HANDLING :

The cover is provided with 1 or 2 keyways to allow removal by means of a hook or pick.
The cover can be removed from the 120° angle.

OPTION(S) :

- Badging : Please enquire.
- Badging space depending on size of cover.



- (☞) Certified characteristics.
- Weights (kg), dimensions (mm) and drawings provided for your guidance.
- We reserve the right to modify specifications without prior notice.
- Uncontrolled distribution.

CONFIDENTIAL
Property of EJ EMEA
Not to be used without permission.

EJ
ZI De Marivaux | Saint-Crépin Ibouvillers |
BP50409 | 60544 Méru Cedex | France

Quality System ISO 9001 - ISO 14001 - OHSAS 18001

ejco.com

Data sheet :
FT_538492

Date updated :
22.06.2016

Printed : 26.06.2016