



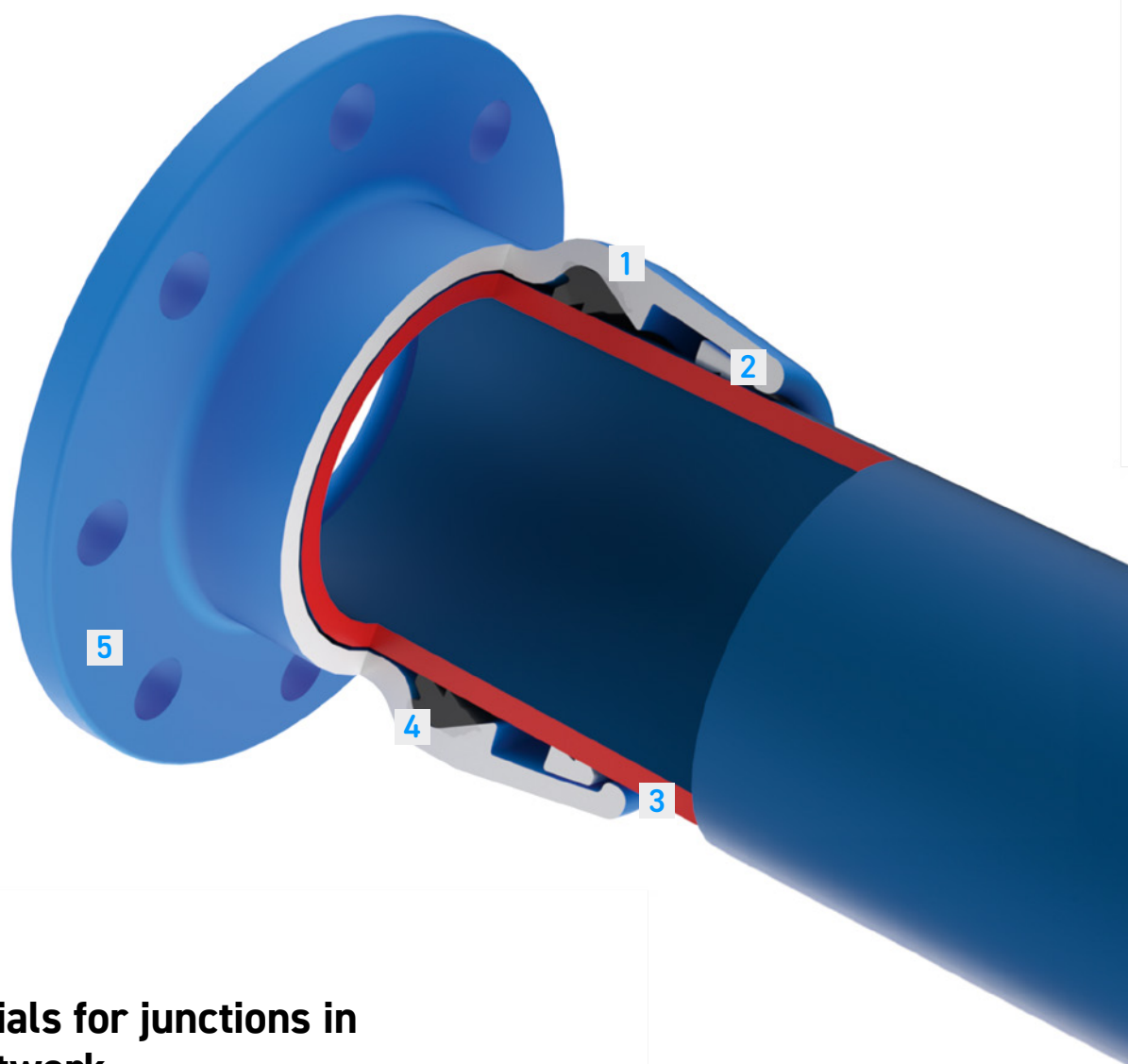
FRISCHHUT PEZ fittings



Fittings with restraint push-in joint for PE pipes –
Simple, secure and fast to assemble

*FRISCHHUT Iron strong quality

A robust design ensures secure connections



Best materials for junctions in the pipe network

1 Body. Extremely robust out of ductile cast iron, the mechanically superior material for junctions in the pipe network.

2 Clamping ring. For the simple, secure, and quick-to-assemble locking of the inserted pipe without removing the oxide layer or using special tools.

3 Pure opening without external rubber rings. To inspect the connection and to avoid unnecessary materials. This minimizes environmental impact. Furthermore, cast iron is also 100 % recyclable at the end of its **service life**.

4 3S-gasket from the decades-proven Frischhut KS program. Separating the sealing function from the clamping ring increases the safety and reliability of the system.

5 Frischhut Epoxy. Superior protection and longer product service life based on GSK requirements. Frischhut was the first manufacturer to introduce an epoxy powder without BPA labeling requirements – Resicoat R8, currently the highest standard for products in contact with drinking water.

PEZ – for quick and easy PE pipe connections in all weather conditions



No special tools
or equipment
necessary



Installation
in all weather
conditions



Iron strong –
best mechanical
properties



Fast
assembly

**With just a few components, you can
build any piping network**



Trust for over 30 years

In collaboration with drinking water suppliers, we developed PEZ around 30 years ago: a simple, secure, and quick-to-assemble push-in connection for PE piping systems.

Ductile cast iron – proven quality

We use ductile cast iron, the material with the best mechanical properties for junctions in the pipeline network. Cast iron can be fully recycled after its service life and be used to manufacture new high-quality products.

Secure connections – no tools, no stress.

The primary customer requirement is a screwless, self-locking system that can be installed without the need for special tools.

The mechanical connection can be made in any weather condition or with residual water in the pipe, even when welding is not an option.

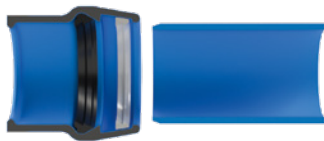


Questions?

Our experts are happy to
assist with planning and
product selection.

sales@frischhut.de
www.frischhut.de/en/contact

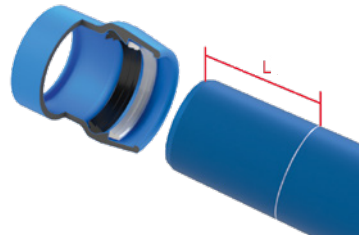
Assembly instructions



1 Remove the protective cap, then visually inspect the fitting socket and pipe ends for contamination or damage. Important: The edge of the gasket and the clamping ring teeth must point toward the inside of the socket. Contaminated (dirty) components should be cleaned and damaged pipe ends must be cut back and chamfered at a 15° angle to a length of approximately 15 mm.



3 Insert the pipe fully into the socket until it stops.



2 The required insertion depth [L] must be marked on the pipe end before installation (see table). Use drinking water-approved lubricants and apply a thin layer exclusively (!) on the gasket.



4 Pull back the pipe to activate the restraining mechanism [R]. This also serves as a quality check during assembly.

Ø dn	63 mm	75 mm	90 mm	110 mm	125 mm	160 mm	180 mm	225 mm	250 mm
[L]	112 mm	117 mm	122 mm	137 mm	147 mm	165 mm	175 mm	178 mm	192 mm

Note: When using PE pipe class SDR 17, a liner should be used for reinforcement due to the low wall thickness!

Product tests show the superior quality for critical junctions in the piping network



The mechanical advantages of the cast iron fittings are evident on the test bench where they can withstand testing pressures well beyond typical operating conditions. Countless tests and user trials guarantee an operating pressure of 16 bar. You will receive exceptionally strong products of highest quality for the critical junctions in your piping network.

Available products

All common installations can be realized by a compact product range



MMD-PEZ

Double socket



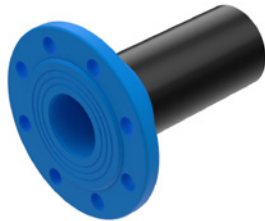
MMK-PEZ 45°

Double socket bend 45°



E-PEZ

Flanged socket



GPE-F

Flange to PE transition piece



i-PEZ

Adaptor



Rotable flange for welded PE stub ends



MMA-PEZ

Double socket T with rotatable flanged branch



EN-PEZ

Hydrant duckfoot bend with rotatable flange

Some installation situations are so special that the PEZ program is not sufficient. For such situations we offer a wide range of KS fittings as an addition. Suitable for all common plastic pipes.

For details, visit our website at www.frischhut.de/en/products



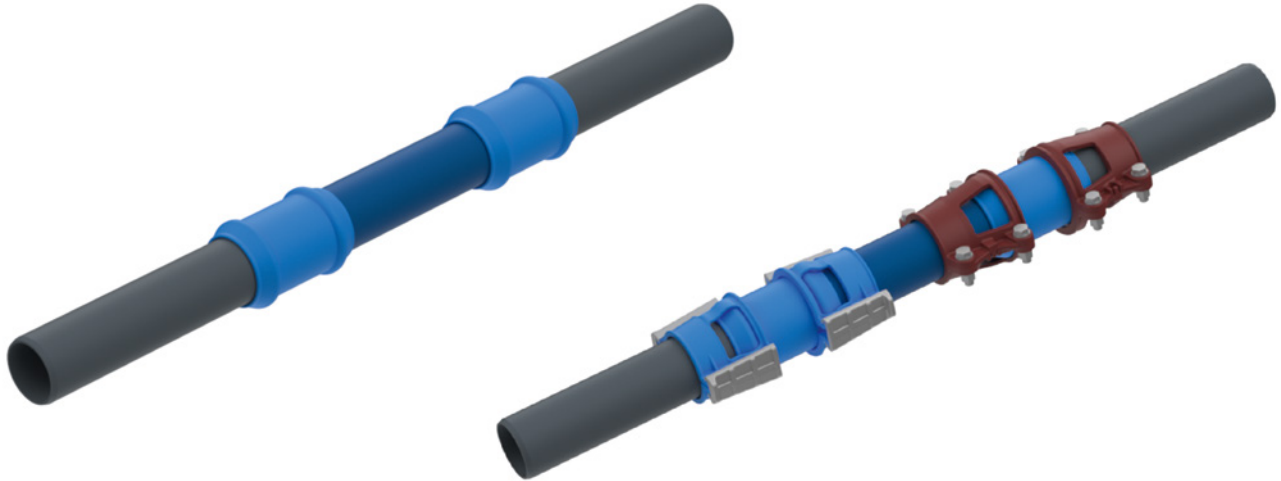
Find. Order. Connect.

The corresponding item numbers for each pipe diameter (dn) are listed in the overview. All technical details can be found in the online product catalog: For details, visit our website at www.frischhut.de/en/products

MMD-PEZ		MMK-PEZ 45°		E-PEZ		GPE-F SDR 11		GPE-F SDR 17	
						40/50	5200000770		
				50/63	5270001593	50/63	5200000771		
						80/63	5200000787		
				65/75	5270001594	65/75	5200000772		
90	B185900811	90	B189200811	80/90	5270001595	80/90	5200000773		
110	B185901011	110	B189201011	100/110	5270001596	100/110	5200000774	100/110	5200000781
125	B185901021	125	B189201051	100/125	0106040308	100/125	5200000775		
160	B185901211	160	B189201211	150/160	5270001598	150/160	5200000776	150/160	n.a.
180	B185901221	180	B189201251	150/180	5270001599	150/180	5200000778	150/180	5200000782
225	B185901411	225	B189201411	200/225	5270001600 (PN 10) 5270001601 (PN 16)	200/225	5200000779 (PN 10) 5200000780 (PN 16)	200/225	5200000783
				200/250	5270001602 (PN 10) 5270001603 (PN 16)				
						300/315	5200000784 (PN 10)	300/315	5200000785

GPE-i		Rotable flange		MMA-PEZ		EN-PEZ DN 80		EN-PEZ DN 100	
80/63	5200000787								
80/90	5200000786	80/90	5200000586	90/80	5270001604	90	5270001617		
100/110	0106470030	100/110	5200000587	110/80 110/100	5270001605 5270001607	110	5270001621	110	5270001618
100/125	0106470031	100/125	5200000588	125/80 125/100	5270001606 5270001608	125	5270001622	125	5270001619
125/160	0106470032					160	5270001624		
150/160	0106080942	150/160	5200000589	160/80 160/100 160/150	5270001609 5270001611 5270001613				
150/180	0106470034	150/180	5200000590	180/80 180/100	5270001610 5270001612	180	5270001623	180	5270001620
		200/200	5200000592 (PN 10)						
200/225	0106470035	200/225	5200000591 (PN 10) 5200000593 (PN 16)	225/80 225/100 225/200	5270001614 5270001615 5270001616 (PN10)				
200/250	0106470036	250/250	5200000594 (PN 10) 5200000596 (PN 16)						
		250/280	5200000595 (PN 10) 5200000597 (PN 16)						
		300/315	5200000598 (PN 10) 5200000599 (PN 16)						i-PEZ
		350/355	5200000600 (PN 10) 5200000601 (PN 16)					2"/63 FB/63	B180200411 B180200420

Cracks in old plastic pipes can be repaired using U-KS pieces



Old plastic pipes often become brittle and may show longitudinal cracks or other defects. In such cases, it is recommended to replace an entire pipe section with a new one.

Frischhut offers a solution using U-KS fittings, as they can be fully slid onto the pipe and do not contain any built-in restraining mechanism.

Repair procedure step by step

1 Carefully cut out the pipe section to be replaced.

2 Prepare a new, suitable pipe section. For PVC pipe systems, this new section is often made out of a PE pipe. The Frischhut U-KS is approved for both materials.

3 Clean all pipe ends and sealing rings thoroughly, chamfer generously if necessary, and lubricate well with a suitable lubricant or silicone spray approved for drinking water use.

Caution: Work particularly carefully here, as depending on the pipe, sliding the fittings may be very difficult. If sliding-on is not possible, the pipe can be reworked or a Frischhut pipe sealing clamp (RDS-12) without restraining mechanism can be used instead of the U-KS.

4 Slide the Frischhut U-KS fittings onto the old pipe ends.

5 Insert the new, suitable pipe section and slide the U-KS fittings onto it.

6 If necessary, secure with Frischhut restraining-clamps to ensure a restrained connection (option with screwed restraining-clamps in red or restraining clamps with wedges, type SL in blue).

Frischhut Epoxy – Protection that lasts for decades

Frischhut Epoxy sets new standards and surpasses conventional coatings in the key aspects of pore-free application, impact resistance, edge protection, and resistance to disbonding. This means a significantly longer service life for your fittings.

The following 5 elements form the basis for Frischhut Epoxy



Cast-iron products of very high quality

The best coating can only be applied to excellent castings. This is ensured by our foundry and coating experts.



Reliable process

Our robot-controlled fluidized bed sintering process (EWS) guarantees consistently high quality – precise and reliable at all times.



Decades of experience

Our experts have decades of experience and know-how in manufacturing and further development.



Strict quality control

Our processes are not only monitored internally but also by an accredited testing institute. This ensures that you receive only the best.



GSK quality seal

Certified excellence: Our products meet the strict requirements of the Quality Assurance Association for Heavy-Duty Corrosion Protection (GSK) and exceed them. For years, we have used the Resicoat R8 powder without BPA labeling requirement – the highest standard for products in contact with drinking water.

*FRISCHHUT